



2020 PROSPECTUS

Summer Boarding Courses at Wellington College

FOR STUDENTS AGED 13-16



Accredited by the
 BRITISH
COUNCIL
for the teaching
of English in the UK

UK's Top Ranked Multi-Campus Summer School



SUMMER BOARDING COURSES AT WELLINGTON COLLEGE

AGES 13 - 16

Summer Boarding Course at Wellington College takes place at one of the UK's most prestigious schools. Wellington College was founded in 1859 as a memorial to the Duke of Wellington. The school boasts many impressive buildings and is set in over 400 acres of grounds.



OVERVIEW OF THE PROGRAMME

SUMMER BOARDING COURSES AT WELLINGTON COLLEGE

Summer Boarding Courses at Wellington College is an academic summer programme designed specifically for students aged 13-16. Students have the opportunity to combine a range of subject tuition with our leadership development programme.

The English for Specific Purposes (ESP) courses include a dynamic range of different subject specialities, preparing students for life at a leading English speaking University or success in the global workplace. Students studying with us at Wellington College will have the opportunity to choose from the following six subjects:

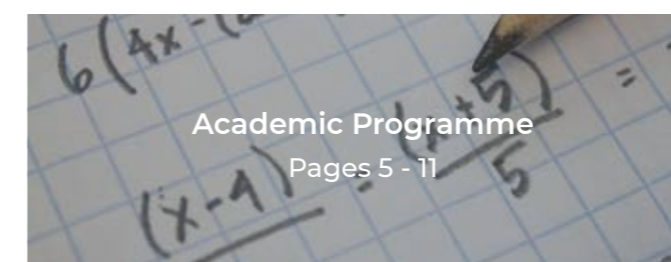
- General English
- Business
- IB Preparation
- Introduction to Engineering
- Mathematics
- Sciences

As well as their core subject, students will also participate in 10 hours of leadership development each week. Due to the academic nature of the programme a minimum English level of B1 (Intermediate) is required.

Outside of the classroom students will have access to a variety of social activities and events. Wellington College offers a wide range of facilities including a theatre, sports centre and indoor and outdoor swimming pools.

To conclude the course, students will have a formal graduation event. During the graduation students will celebrate the memories created across the two-week course and receive their certificate and report.

From the moment you first contact us, our dedicated team of staff will be on hand to support you and your family as you prepare for the summer experience. Our Student Support Managers can help and advise on every aspect of the programme from travel arrangements to academic consultancy.



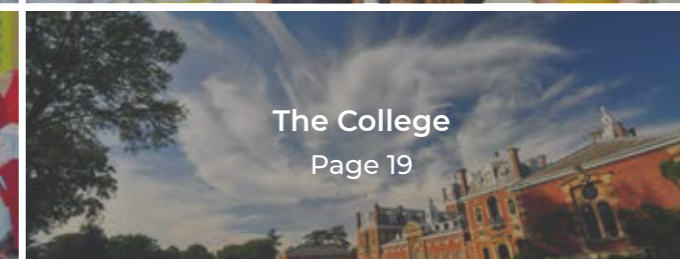
Academic Programme
Pages 5 - 11



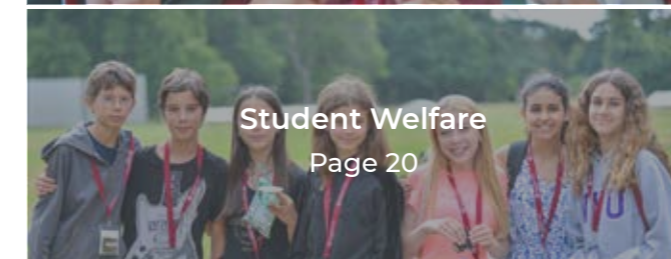
Global Leaders
Page 12 - 13



Social Programme
Page 14 - 16



The College
Page 19



Student Welfare
Page 20



How to Book
Page 23

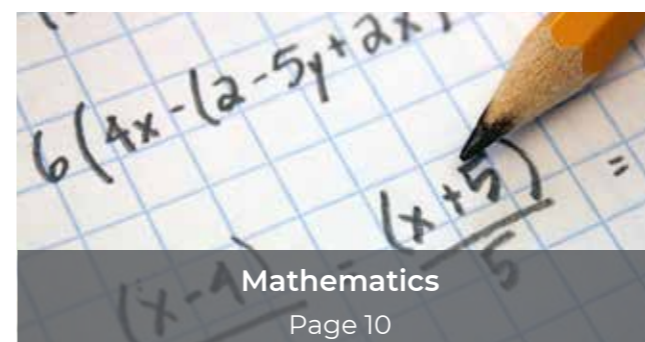
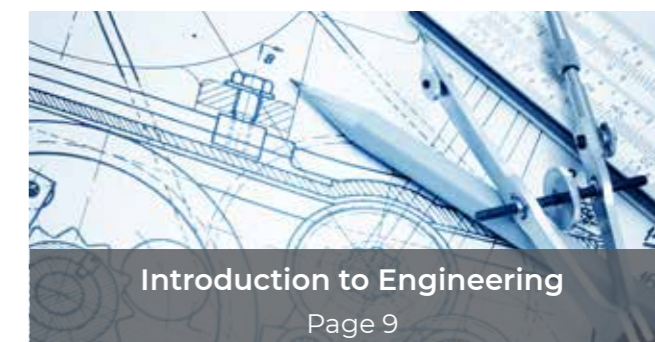
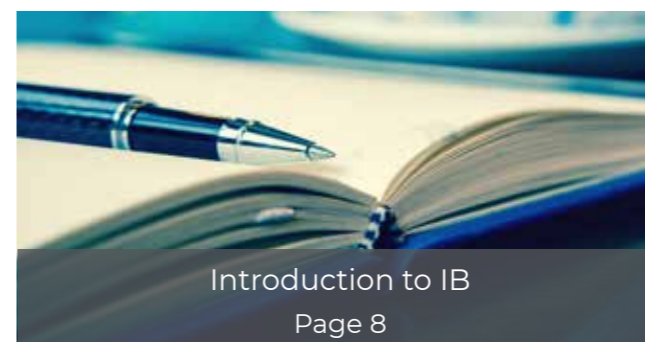


SAMPLE TIMETABLE

Monday	Tuesday	Wednesday	Thursday	Friday	Saturday	Sunday
07:15 - Wake-up						
08:00 - House Meeting						
Breakfast						
Arrival Day / Excursion	Assembly	Excursion	Assembly			
	09:30 - 11:00 Electives		09:30 - 11:00 Electives			
	Break		Break			
	11:30 - 13:00 Electives		11:30 - 13:00 Electives			
	Lunch		Lunch			
	House Time		House Time			
	14:30 - 17:30 Leadership Programme		14:30 - 17:30 Leadership Programme	14:30 - 17:30 Wellbeing Activities		
	House Time		House Time			
Dinner						
19:30 - 21:30 Evening Event	19:30 - 21:30 Wellbeing Activities	19:30 - 21:30 Evening Event	19:30 - 21:30 Wellbeing Activities	19:30 - 21:30 Evening Event		
House Time						
22:30 - Lights Out						

ACADEMIC COURSES

At Summer Boarding Courses at Wellington College, our academic programme offers students between the ages of 13-16 the opportunity to further their knowledge of their chosen subject. Students have a choice between General English, Business, IB Preparation, Introduction to Engineering, Mathematics and Sciences. All subjects are taught in English using a communicative approach, so that in addition to learning about the subject itself, all students will develop their confidence in using English communicatively, collaboratively and creatively.



Global Leaders
Pages 12 - 13



GENERAL ENGLISH

Length of Course



2 weeks

Lessons



2 x 90 minutes per day; 5 days a week

Level Required



Intermediate and above

Suitable for



Students interested in any future study or career which necessitates an advanced level of English.



Why Choose General English?

The General English course focuses on developing and improving English in many areas including day to day situations as well as academic settings. We have designed the course to help our students build in confidence and improve their ability when using English. Through different teaching methodologies, the course ensures that students practice English language in communicative ways. Students take part in engaging lessons, where they receive guidance and support from their teacher.

Improving Language Skills

During the course students will have the opportunity to develop their English language skills and work on areas including speaking, vocabulary, writing and grammar in both written and spoken form. Through a range of different communicative methods students will improve on their fluency within real life contexts and scenarios.

Making it real – 21st Century Skills

A key aspect of the General English course is the development of the skills needed for further education and study. Students will look at how to critically evaluate and critique information as well as how to communicate their thoughts clearly and decisively with others. Skills such as collaboration, teamwork, presentation skills, research and analysis are all vital in the modern world, and our General English course works to develop these skills for our students in a fun and engaging environment.

Time to Shine

Through the Time to Shine projects, the students are challenged to work on their 21st Century skills through project work throughout the course. Culminating in the Time to Shine ceremony at the end of each week, these projects include debates, public speaking, multimedia presentations. This really gives the students a chance to work creatively and independently together in a supported environment. By working together on projects in a diverse environment, students will also learn to collaborate effectively as part of a team, nurturing their sense of social and cross-cultural awareness.

BUSINESS

Length of Course



2 weeks

Lessons



2 x 90 minutes per day; 5 days a week

Level Required



Intermediate and above

Suitable for



Students interested in future study or careers in business and management



Why Choose Business?

Our Business course has been developed for young business people of the future. On the course students will learn and develop their business skills whilst gaining knowledge of the latest business practices. Subjects in Business include: budgeting and finance, marketing, sustainability and growth, as well as the development of the English language skills necessary for success in business. As part of our Time to Shine project, students will work together to create and develop a business plan for a new start-up company and deliver a product pitch to a panel of judges.

What you'll learn

During the course students will gain a better understanding of core business concepts relating to setting up a company. They will use analytical reasoning and critical evaluation in order to recognise and apply competitive strategies. Through a series of real-world examples and case studies students will begin to understand what makes a great business. Alongside this students will also develop core communication and presentation skills required for the boardroom.

Time to Shine

Our Time to Shine programme allows students to take part in a collaborative project where they will develop the concept and business plan for a new start-up company. As part of this project students will give a sales pitch presentation about their start-up company and product to a panel of judges who will offer valuable feedback and guidance. By working together students will develop vital key skills needed in business, such as negotiating strategies, interpersonal communication, teamwork, and presentation skills. Time to Shine is a great opportunity for students to apply their knowledge and skills to something that they have created and developed as a team.

What You'll Take Away

Through practical and theoretical lessons and assignments our students will successfully complete the course with a developed set of core business skills, business knowledge and business in practice. Whether students have an interest in business, marketing or finance, this course will give them the opportunity to apply their new skills to projects and assist them in preparing for their aspiring profession.

IB PREPERATION

Length of Course

2 weeks

Lessons

2 x 90 minutes per day; 5 days a week

Level Required

Intermediate and above

Suitable for

Students who wish to study the International Baccalaureate Middle Years Programme (IBMYP) or Diploma Programme (DP) in the future



Why Choose Introduction to IBMYP?

The International Baccalaureate Middle Years Programme is renowned worldwide for helping students to achieve success in traditional academic subjects, as well as broadening students' overall intellectual, emotional and ethical awareness through its holistic curriculum. The IBMYP integrates the development of the students' depth of knowledge with a focus on their physical wellbeing, mental wellbeing, and appreciation of 21st century skills.

What You'll Learn

Our Introduction to IBMYP programme concentrates on the following disciplines, which constitute the core of a year-round IBMYP curriculum: Humanities; Sciences; Mathematics; Arts; and Technology. The course focuses on developing both subject knowledge within these fields, as well as the 21st century skills associated with successful academic study, such as critical thinking skills, communication skills, collaboration skills and problem-solving skills.

How You'll Learn: Time to Shine

An important component of the International Baccalaureate is its focus on examining the nature of knowledge itself, such as in its Theory of Knowledge module. In our Introduction to IBMYP programme, students will broaden their theory of knowledge by participating in a research and presentation project, through which they will develop key critical thinking skills as questioning the nature of knowledge, the validity of sources, and the importance of argumentation and rhetoric.

What You'll Take Away

Students who enrol in our Introduction to IBMYP programme will be better able to begin studying a Middle Years Programme for having sampled the type of academic subjects the curriculum offers, and being taught through a curriculum which models the IBMYP's connection of academic study with a broader focus on improving overall intellectual, physical and mental wellbeing.

INTRODUCTION TO ENGINEERING

Length of Course

2 weeks

Lessons

2 x 90 minutes per day; 5 days a week

Level Required

Intermediate and Above

Key Skills Developed

Engineering, innovation, design & teamwork

Suitable for

Further study or careers in all Engineering disciplines



Why Choose Introduction to Engineering?

Engineering is the study of how science, mathematics, construction and design can be connected together in order to solve key issues. Introduction to Engineering offers students a gateway into understanding how these fields work together, and the areas in which they can be applied, such as in build bridging, city planning, architecture, the design of aircraft and the manufacture of automobiles.

What You'll Learn

In Introduction to Engineering, students will be able to take their first steps into the fields of Civil Engineering, Mechanical Engineering, Environmental Engineering and Robotics. Through practical project lessons, students will discover how important principles of engineering, such as thermodynamics, determine the construction and design of products, objects and services.

How You'll Learn: Time to Shine

In our Time to Shine project lessons, students are presented with teamwork challenges to design such engineering feats as stable bridges, high towers, working windmills and self-propelled miniature vehicles like cars and airplanes. Through taking part in these fun, communicative and collaborative challenges, students will learn about fundamental engineering principles.

What You'll Take Away

Our Introduction to Engineering students will feel better prepared to study any Engineering discipline in the future. They will additionally develop an improved appreciation of the practical applications of the science and mathematical subjects they already study, through seeing the use of these disciplines in real-world situations. Students will also develop broader 21st century skills, such as communication skills, collaboration skills, critical thinking skills, research skills and presentation skills.

MATHEMATICS

Length of Course

2 weeks

Lessons

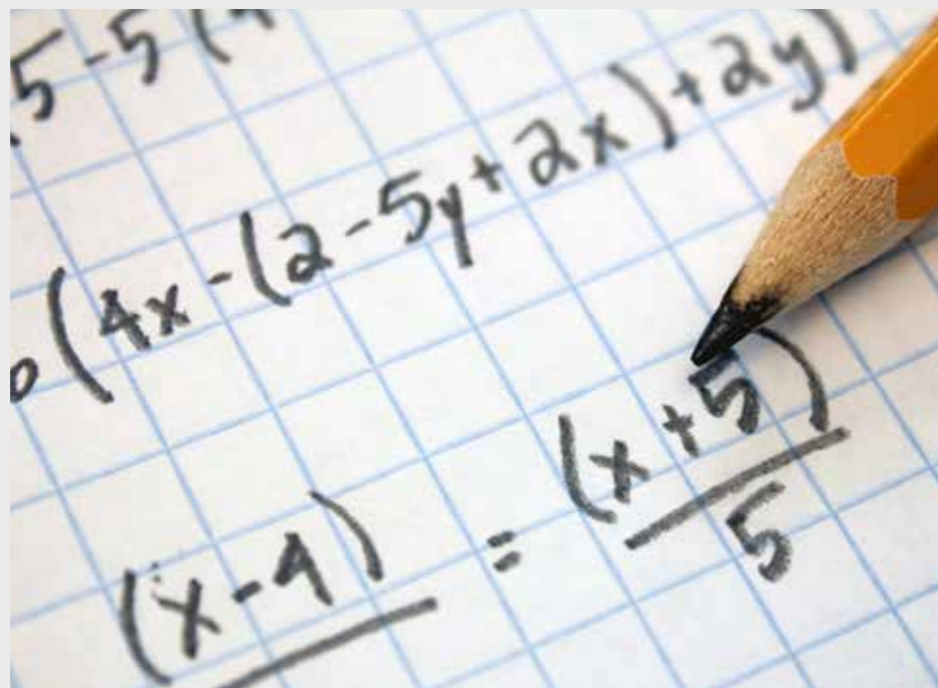
2 x 90 minutes per day; 5 days a week

Mathematics Level Required

A minimum Mathematics level is necessary for the course.

Suitable for

Students interested in pursuing future study in: all Mathematics disciplines; Natural Sciences; Formal Sciences; Engineering; Computer Sciences.



Why Choose Mathematics at Summer Boarding Courses?

It is said that Mathematics is the study of every possible pattern which can exist. As such, Mathematics is a broad subject with a wide application in both professional and academic fields. It is an essential component not only of future study in Mathematics, but also in Natural Sciences (i.e. Chemistry, Physics, Astronomy and Biology) as well as Formal Sciences (i.e. Logic, Statistics, and Robotics). It is also essential to have an advanced level in Mathematics in order to study Engineering and Computer Sciences, in addition to many other scientific subjects.

What You'll Learn

Students will focus on both Pure and Applied Mathematics. Pure Mathematics is study of mathematics in the abstract; how numbers and calculations can be analysed to reveal their fundamental elements. Applied Mathematics is how we can use numbers and calculations in real-world situations, such as in science, medicine and engineering. Subjects studied in the course include: Graph Theory, Algorithms, Tessellations, Group Theory, Fractals, Complex Numbers, Fibonacci and

the Golden Ratio, Conic Sections, Kinematics, Codes, Ciphers and Probability.

How You'll Learn: Time to Shine

Each week our Mathematics students will work together to participate in a research and presentation project. They will all have the opportunity to give presentations based on their own research, and participate in fun and collaborative class competitions.

What You'll Take Away

By studying in a student-centred environment, and through a focus on developing 21st century skills, our Mathematics students can return home with an introductory understanding of the basics of Higher Mathematics, better confidence in their communication and presentation skills and with greater motivation to apply these skills to their future learning.

SCIENCES

Length of Course

2 weeks

Lessons

2 x 90 minutes per day; 5 days a week

Level Required

Intermediate and above

Suitable for

Students interested in pursuing future study in Physics, Biology, Chemistry, Mathematics or Life Sciences.



Why Choose Sciences?

Sciences is ideal for young learners who want to understand how the universe works through the study of its biology, chemistry and physics. Students will develop both scientific and study skills that relate to a wide variety of scientific topics and concepts, helping them to understand and develop a sound scientific approach.

A Broad and Balanced Scientific Grounding

By giving equal importance to each of the core science subjects, i.e. Chemistry, Physics and Biology, students will develop a better understanding of the laws that govern our physical world and have the opportunity to see the scientific world from a variety of perspectives. This balanced grounding and understanding of the physical universe gives students the skills that they will need to effectively explore and enjoy new areas of science in the future.

Concept and Practice

The Sciences curriculum focuses on developing an understanding of both scientific concepts and methodology, as well as an understanding of the practical ways that scientific advancements influence our world. Areas explored include the complex dynamic system of the Earth's climate, space exploration and medical advancements. By looking at these topics from a variety of critical perspectives students will improve their research, analytical and problem solving skills and develop their scientific minds.

Time to Shine

All Sciences students undertake a research project as part of our Time to Shine programme, collaborating and working with others as part of a team to explore a scientific problem and then present their scientific findings to an audience. This experience simulates some of the real life projects that we hope our science students will interact with in the future and allows them to fully appreciate the extent of the impact that effective scientific study can have.

SBC LEADERSHIP

SBC Leadership focuses on the self-development of our students, furthering their self-knowledge, self-awareness and confidence in order to become 21st century leaders. Through exciting and dynamic Leadership Challenges, students will learn how to identify and influence their key personality traits so as to achieve their full personal potential.



10 hours leadership development per week



Reflective Log



Mixture of classroom and practical learning



End of course Leadership Report

Course Overview

Led by our on-site Head of Leadership, the SBC Leadership programme takes place across four afternoons each week. Each session, students work either individually or in teams to complete a physical, intellectual, artistic or STEM-based challenge. Each SBC Leadership challenge develops a key component of self-reflection and self-evaluation, designed to strengthen the reflective skills, self-awareness and self-confidence needed for leadership in the 21st century.

Inspiring Leaders

Each Leadership Challenge is inspired by an influential and pioneering leader. Students will participate in a "Thought For The Day" seminar, where the story and experiences of an exemplary leader will be discussed. The story will provide the inspiration for the challenge that the students will participate in. The programme includes a wide variety of challenges ranging from physical activities such as Orienteering and Bushcraft challenges, to scientific challenges such as STEM and Engineering challenges, to academic challenges such as Debating and Public Speaking. In order to complete these Leadership Challenges, students will look at case studies of leading pioneers in these fields, such as Ada Lovelace, Michael Faraday and Barack Obama.

Reflective Practice

Students will be guided through three steps for each Leadership Challenge they undertake: Prepare, Perform and Evaluate. As part of their preparation, students will analyse the task and their ability to do it, setting goals and identifying challenges that they think they will face. On completion of the Leadership Challenge, students will reflect on how they performed and the leadership skills they developed. Through such self-evaluation, SBC Leadership students will learn to identify their personal barriers, and develop strategies to overcome them.

SOCIAL PROGRAMME



The Summer Academy Social Programme allows students to socialise with friends through our wellbeing and event programmes. Both wellbeing activities and events take place in the evenings and allow students to enjoy the outstanding facilities of Wellington College.

Wellbeing

Our Wellbeing Programme provides opportunities for students to relax, be creative and reenergise around their studies. Students can choose from a variety of wellbeing activities during their course.



Wellbeing activities include:



Football



Badminton



Wellness walks



Yoga



Swimming



Art workshops



Nature walks



Museum visits



Reading & Conversation clubs



Board games

SOCIAL PROGRAMME

Events

Our Events Programme brings everyone together in a variety of traditional British and international activities, providing many experiences for our students to have fun, be inspired and make new friends.



Typical events include:



Capture the Flag



Photo Challenges



International Night



Challenge Nights



Movie Night



Disco



Graduation

At the end of the course all students will attend a formal graduation party to celebrate their achievements. The evening consists of a three-course meal, presentations and a disco.

EXCURSIONS

EXPLORE BRITISH CULTURE

In addition to our varied programme, students will have two whole day excursions per week (excluding the departure week when they have one) during their course, to the following destinations.



Oxford Academic Excursion

A day exploring the beautiful City of Spires. Students will have a guided walking tour to learn about the history of the city and its many university colleges and discover why it's become one of the most famous cities in the world! At the end of the walking tour, students will gather in the historic Oxford Union for a talk on the fascinating history of Oxford University. In the afternoon, students will enjoy leisure time at the Westgate shopping centre.



London

A day out in the Capital City! Students will see many famous tourist attractions such as Big Ben, the Houses of Parliament and Trafalgar Square, and visit a world-class attraction such as The British Museum or London Eye for an iconic experience. There will also be plenty of time to shop for souvenirs on London's famous high streets during this exciting day out.



Thorpe Park

Visit one of the UK's biggest theme parks, home to some of the world's most exciting and biggest rollercoasters! Thorpe Park contains themed attractions to suit all interests and is sure to provide a fun day out for all of our students.





THE COLLEGE



Accommodation

The accommodation at Wellington College comprises of two boarding houses – one for boys and one for girls. Most of the rooms are singles, with a small number of shared rooms. Each house has a number of shared bathrooms strategically placed throughout the accommodation and fantastic social spaces for the students to relax in.



School Facilities

Wellington College provides a wide range of facilities across the 400-acre campus, including:

- Theatre
- Purpose built classrooms
- Theatre
- Indoor and outdoor swimming pool
- Art rooms
- Sports hall



Meals

Students will have their meals in Wellington College's spectacular dining hall. A continental breakfast is provided every day, with cooked options available three times each week. For lunch and dinner there is always a choice of at least two hot meals, including a vegetarian option. Students also have a delicious salad bar available to them as well as fresh bread, fruit and desserts.

STUDENT WELFARE



Summer Boarding Courses at Wellington College is committed to offering students a safe and secure environment in which they can thrive socially and academically. The welfare of students is the number one priority of all our friendly and professional staff.

We have 1 member of staff to every 6 students and our dedicated staff team are available 24 hours a day to assist with any needs that they might have during their stay with us. The balance of support, supervision and mentoring from our staff ensures that all students make the most of their summer experience. We pride ourselves on offering the best possible support to students, confirmed by Areas of Strength in The Care of Under 18's, and Care of Students criteria from our British Council accreditation. Summer Boarding Courses is committed to the safeguarding and protection of all students in our care.

Student Support Managers

Your dedicated Student Support Manager will be your main point of contact and will guide you through the initial booking process all the way to the end of the summer. They are here to answer any questions that you may have as you prepare for your summer experience with us. During the summer they will be the main point of contact, providing you with updates from the school and assisting with any ongoing support that you and your child need. The team will answer questions within one working day throughout the year to ensure you have all the information that you need.

Management Team

The Management team oversee the running of the course and ensure that students are provided with the highest quality experience. With each manager overseeing the welfare of students, academic and social programme, the team are committed to ensuring a safe and enjoyable experience for every student.

Tutors

All classes are taught by our professional and passionate team of tutors. All tutors meet the requirements of the British Council inspection criteria and hold a special interest in their area of tuition. Our tutors also support the welfare of students outside of the classroom.

Mentors and House Parents

Our Mentors and House Parents are key members of the staff team who support and assist students throughout their stay. Our team of Mentors organise the college's social events and leadership programme as well as accompanying students during excursions. The House Parents play a key role in the pastoral care of the students and are the first point of contact for students. They are approachable, caring and are always available in the boarding houses and help during break and mealtimes. They offer our students a friendly face with whom they can discuss any specific welfare issues.

“

Our children have attended SBC for two consecutive years and we have witnessed a tremendous development in their English...

Carlos, Parent, Angola



“

I think it was a very good experience. I loved the place where we lived, the activities, the staff, my house... I met a lot of friends and I think my English is better than before the camp. I hope I can return in this camp next year!

Clara, Student, France

“

I treasured the time being here, learning and discovering new things. It gave me precious memories and I really enjoy the time being here.

Klara, Student, Switzerland



TRAVEL INFORMATION

HOW TO FIND US



Students' travel to and from England must be booked and paid for independently. Once your booking with us has been confirmed, we will ask you to provide us with your child's travel information as early as possible. This is very important so that we can arrange airport transfers if required.

Transfers

For an additional cost we offer a Heathrow Airport Transfer Service to and from Wellington College on the published arrival and departure dates. The journey takes around 30 minutes from London Heathrow to Wellington College. Students arriving to and departing from Heathrow airport can use our Airport Coach Transfer Service which operates between 09.00 and 16.00.

On arrival at Heathrow airport, all students are met by a member of SBC staff who will be wearing a bright yellow SBC t-shirt. Similarly, when departing from Heathrow airport our staff will accompany all students and assist with the check-in procedure at the airport.

If your child will be flying to the UK without a parent or guardian we recommend you request Unaccompanied Minor assistance direct from the airline. For more details on airport transfers please visit our website. Please contact us for a quotation and further information. The

deadline for booking a transfer is the 12th June, unfortunately, a transfer may not be guaranteed after this date.

Parent Transfer

Parents or guardians are also welcome to bring children to the school and collect them themselves.

Location

Wellington College
Crowthorne
Berkshire
RG45 7PU

For all enquiries and correspondence please contact Summer Boarding Courses Ltd
info@summerboardingcourses.co.uk

+44 (0) 1943 878 518

HOW TO BOOK

Make a Booking

A booking can be made online on our website:

summerboardingcourses.co.ukmake-a-booking

We recommend booking early as course places are limited. If you are a travel agent or booking on behalf of a family, please let us know at the time of booking.

Confirmation of Place

Upon receipt of your completed booking form, we will send you confirmation of your place, alongside an invoice and a welcome pack with information about your chosen school or college.

Payment of Fees

A deposit of £700 is required to secure your booking. The remaining course fees must be paid by the 11th May 2020. Any bookings after this date must be paid in full at the time of booking.

Transfers

For a supplementary fee we offer an Airport Transfer service to and from Heathrow Airport. Please ask us about this at the time of booking.

SBC at Wellington College is operated by Summer Boarding Courses Ltd who will handle all matters including payments and enquiries. Summer Boarding Courses Ltd is an organisation which contracts the use of facilities, but has no formal connection with Wellington.

All content and information is correct at time of press – August 2019.



Preparation for Summer

Our Student Support Managers are on hand to answer any queries you may have about the summer, from questions about our courses, travel to the UK, to visa requirements and much more. Please contact us on:

T: +44 (0)1943 878 518

E: info@summerboardingcourses.co.uk



TOGETHER WE'RE EXTRAORDINARY



Summer Boarding Courses is part of the Dukes Education family. The Dukes Education Group is registered in England and Wales number 09345899. Registered address 14-16 Waterloo Place, London SW1Y 4AR.